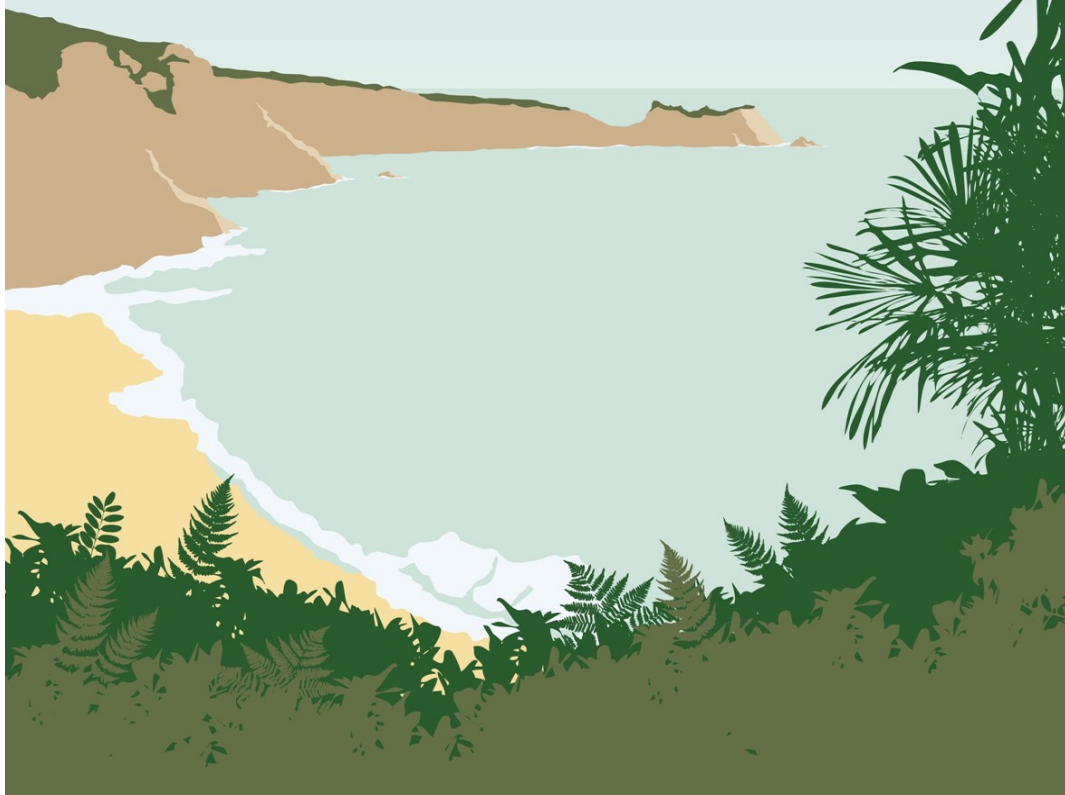


TEACH BY THE BEACH

PRIMARY SCHOOL DIRECT
INITIAL TEACHER TRAINING



Poole TSA
Teaching School Alliance



The Learning Institute
South West
Teacher Training Cornwall
learninginstitute.co.uk

THE PROGRAMME



At the PTSA we run a Primary School Direct Initial Teacher Training Programme in conjunction with The Learning Institute.

Our vision is to develop and prepare the teachers of tomorrow with the skills and knowledge they need to deliver creative and challenging teaching and learning in the Primary setting.

We have been running our School Direct programme successfully for 6 years now. As a teaching school, we tend to have a smaller cohort of trainees (we are delighted to have grown from 5 trainees in 2018-19 to 10 trainees this year). Working in a small, tight-knit group enables our trainees to get to know each other well and form a really supportive network. At Poole TSA we pride ourselves in providing individualised support which enables our trainees to be well prepared for the career ahead of them.



“

Being in school from day 1 has meant that I really feel part of the school team.

PLACEMENTS



Our SDITT programme is designed to enable all trainees to be based in school from day 1 of the Autumn term. Working alongside a class teacher and mentor, each trainee is based in school throughout the year and subject knowledge and research sessions are interwoven for 1 or 2 days, out of school, each week. Our sessions are held at a variety of locations which provide opportunities for study as well as hands-on experience in schools.

During the Spring Term, trainees have the opportunity to learn alongside colleagues in their Second School Placement, which focuses on gaining understanding of their alternative Key Stage. In the Summer Term, trainees return to their base placement school to complete their final classroom experience. Throughout the year, trainees will be required to complete a selection of short, alternative school placements which will provide opportunities to develop understanding of different age ranges and settings.

We offer the opportunity to specialise in the Early Years age range (3-7 years) or to train to teach 5-11 years.

PARTNER SCHOOLS

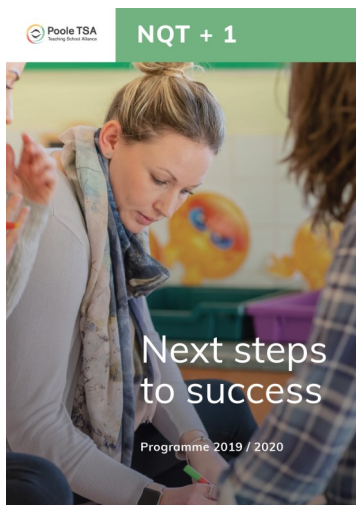
We work with a variety of schools in and around the Poole area, including Lytchett Matravers Primary school, Bearwood Primary School, Stanley Green Infant Academy, Bishop Aldhelm's Primary School and Old Town Infants School to name a few. We will do our best to accommodate you if you have a preferred area although we cannot guarantee this.

ASSESSMENT



Participants are assessed through a combination of evidence gathering and assignments which provide opportunities to combine research, reflection, practice and planning for implementation. Students are provided with the opportunity to qualify with a PGCE as well as Qualified Teacher Status. We are delighted that our trainees have been very successful in gaining employment.

Our programme focuses on Initial Teacher Education, however we recognise that this is the very beginning of an exciting and fulfilling learning journey and we are dedicated to supporting teachers throughout their professional development. We are proud to offer on-going professional development for our School Direct trainees, after they have qualified, in order to support them through their NQT year and beyond.



ELIGIBILITY



Information on the eligibility criteria for being accepted on to teacher training programmes can be found at the following website:

www.education.gov.uk/get-into-teaching

At Poole TSA, we require a degree (in any subject) at 2:2 or above and Maths, English and Science GCSE at C or above. In terms of the GCSEs required, if you do not have the above subjects in A-C grade, don't panic! We would recommend that either you take the relevant GCSE outside of the recruitment process, or alternatively we can facilitate an equivalency test in any (or all subjects) if you are successful at interview. Poole TSA will pay for a first attempt. If a second attempt is required, candidates will need to pay a £50 fee.

Although work experience is not a requirement, we would recommend that anyone applying to School Direct has spent some time in a school. We have already supported many successful school experience placements so if you would like us to arrange one for you please get in touch: we would love to help.



IMPORTANT INFO

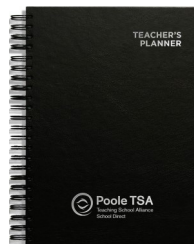


TRAINING FEES/SALARY

Our tuition fee for 2020-2021 is £9250.

Our trainees receive a complimentary Teacher's Planner to support them with their preparation for the year.

(The host school does not pay any salary or fees).



TUITION FEE AND MAINTENANCE LOANS

If you join our programme you will be classed as a full time student, therefore you may be eligible for a tuition fee loan and a maintenance loan.

Tuition Fee Loan: paid directly from the Student Loans Company to us in 3 instalments to cover the cost of tuition fees.

Maintenance Loan: paid directly to the trainee in 3 instalments to cover their costs of living. A percentage of this is non-means tested, but around £5000 of the loan is dependent upon income and personal circumstance. The maximum maintenance loan awarded is £8900.



APPLICATIONS



You can apply for the PTSA School Direct Programme through UCAS.com. Our training provider code is 1RP and our training programme code is 34Q3.

Our interview process includes elements such as a teaching episode, interview, reflective and subject knowledge tasks. Applications are now open. We will be holding monthly interview days until June 2020.

If you need to complete equivalency tests, we strongly advise that you complete your application as soon as possible.



There has been great communication and a positive and motivating atmosphere at interview..



If you have any other queries please get in touch with us. Or maybe it's time to submit your UCAS application—we look forward to receiving it!

FIND OUT MORE

You can find out more on the DfE website:
www.education.gov.uk/get-into-teaching

You may also find useful information on the Learning Institute website:
www.learninginstitute.co.uk

APPLICATIONS

Applications are through the UCAS website:
www.ucas.com/ucas/teacher-training

Address:

c/o Broadstone First School
Tudor Road
Poole
BH18 8AA

Tel: 01202 604063

Email: PooleTSA@broadstonefirst.poole.sch.uk

Web: www.pooletsa.org.uk

